

Crater Lake National Park
Oregon

National Park Service
U.S. Department of the Interior

A wide-angle landscape photograph of Crater Lake National Park. The scene is captured during the "golden hour" of sunset, with a warm, orange glow across the sky. In the foreground, a dense forest of evergreen trees covers a hillside that slopes down towards a calm body of water. The water reflects the light from the sky. In the background, more forested hills and mountains are visible under the soft light of the setting sun.

Public Scoping Newsletter

TRAIL MANAGEMENT PLAN

The National Park Service (NPS) is developing a Trail Management Plan for Crater Lake National Park.

Purpose of and Need for the Trail Management Plan

The purpose of the Trail Management Plan is to guide trail management, investment in trail infrastructure, and visitor use of the trail system for the next 25 years. The plan is needed to:

- improve and diversify recreation opportunities
- improve connectivity between features of interest
- reduce user-created trails
- eliminate unsustainable and underutilized routes
- protect park resources

Goals for the Crater Lake Trail System

The Crater Lake trail system:

- is sustainable, meaning each trail lies lightly on the land, will last a long time, and needs little maintenance
- offers experiences for a diversity of visitors during all seasons
- does not have unnecessary duplication or redundancy
- provides opportunities for visitors to understand what makes the park significant
- protects park resources and limits direct and indirect impacts from trail use
- minimizes the potential for conflict among different user groups
- improves pedestrian circulation and offers alternatives to a vehicle-based visit
- is integrated with trail networks outside the park and is managed in collaboration with partners
- is within the park's personnel and budgetary resources

You're Invited!

The National Park Service will be holding public open houses to seek ideas and comments regarding this plan. You are encouraged to attend one of the following open houses to learn more about the project and provide input.

Medford Open House

Date: Tuesday, January 31st, 2017

Time: 5:30 – 7:30 p.m. Pacific

Location: Medford REI

85 Rossanley Drive, Medford, OR 97501

(541) 732-1938

Klamath Falls Open House

Date: Wednesday, February 1st, 2017

Time: 5:30– 7:30 p.m. Pacific

Location: The Ledge in Klamath Falls

369 6th Street, Klamath Falls, OR 97601

(541) 882-5586

Bend Open House

Date: Thursday, February 2nd, 2017

Time: 5:30 – 7:30 p.m. Pacific

Location: Bend REI

380 Powerhouse Drive., Bend, OR 97701

(541) 385-0594



Proposed Action

The planning team has developed a proposed action, which is the initial National Park Service proposal to address the plan purpose and need. The proposed action is one alternative that will be considered during the planning process. A proposed action is not a preferred alternative. The National Park Service will not select an alternative for implementation until after the planning process is completed.

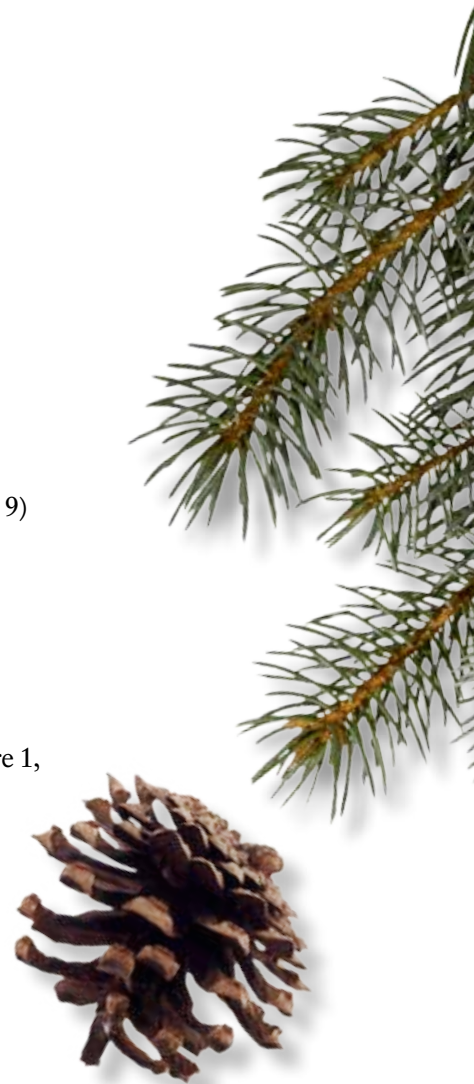
The following trail projects are separated into summer and winter use. Each trail proposal is numbered. The numbers correspond with general locations on Figure 1, Proposed Action Summer Use Trail Map and Figure 2, Proposed Action Winter Use Trail Map. (note – these are not final alignments).



Proposed Action for Summer Trail Use

The following new summer use trails would be opened:

- *Pumice Desert Overlook Trail* — Architectural Barriers Act (ABA) accessible and open to hiking (figure 1, trail no. 2)
- *Mazama Rock Trail* — open to hiking (figure 1, trail no. 3)
- *Mazama Cleetwood Connector Trail* — open to hiking (figure 1, trail no. 4)
- *Mazama to Picnic Trail* — open to hiking (figure 1, trail no. 5)
- *Cascade Mazama Connector Trail* — open to hiking (figure 1, trail no. 6)
- *North Junction Viewpoint / Accessible Trail* — ABA accessible and open to hiking and dog-walking (figure 1, trail no. 7)
- *Grotto Cove Trail* — ABA accessible and open to hiking (figure 1, trail no. 8)
- *Skell Head to Cascade Springs Connector Trail* — open to hiking (figure 1, trail no. 9)
- *Cloudcap to Skell Head Trail* — open to hiking (figure 1, trail no. 10)
- *Headquarters to Rim Loop Trail* — open to hiking (figure 1, trail no. 11)
- *Employee Trail* — open to hiking (figure 1, trail no. 12)
- *Castle Creek Canyon Overlook Trail* — ABA accessible and open to hiking (figure 1, trail no. 13)
- *Munson Valley Trail* — open to hiking (trail no. 14 or no. 15 on figure 1)
- *Grayback Drive/Trail* — converted to a trail and open to hiking and mountain biking (figure 1, trail no. 16)
- *Godfrey Glen to Annie Spring Trail* — open to hiking (figure 1, trail no. 17)





- *Mazama Campground Loop Trail* — ABA accessible and open to hiking and mountain biking (figure 1, trail no. 18)
- *Ponderosa Trail* — open to hiking (figure 1, trail no. 19)

The National Park Service would also examine the feasibility and potential impacts of constructing a full-loop trail around the rim of Crater Lake.

The following summer use trails would be closed:

- *East Bald Crater Loop Trail* (figure 1, trail no. 1).

In addition to the trail actions listed above, the Grouse Hill Backcountry Campsite would be moved further east to improve the backcountry experience. (figure 1, no. 20)

Proposed Action for Winter Trail Use

Winter trail actions are as follows:

- *Hemlock Trail* — rerouted and converted to a designated snowshoe trail (figure 2, trail no. 1)
- *Lady of the Woods Trail* — marked for winter use and designated as a snowshoe trail (figure 2, trail no. 2)
- *Headquarters to Rim Loop Trail* — marked for winter use and designated as a snowshoe/cross-country ski trail (figure 2, trail no. 3)
- *Mazama Campground Loop* — marked for winter use and opened as a snowshoe/cross-country ski trail (figure 2, trail no. 4)



Figure 1 - Proposed Action: Summer Use

National Park Service
U.S. Department of the Interior

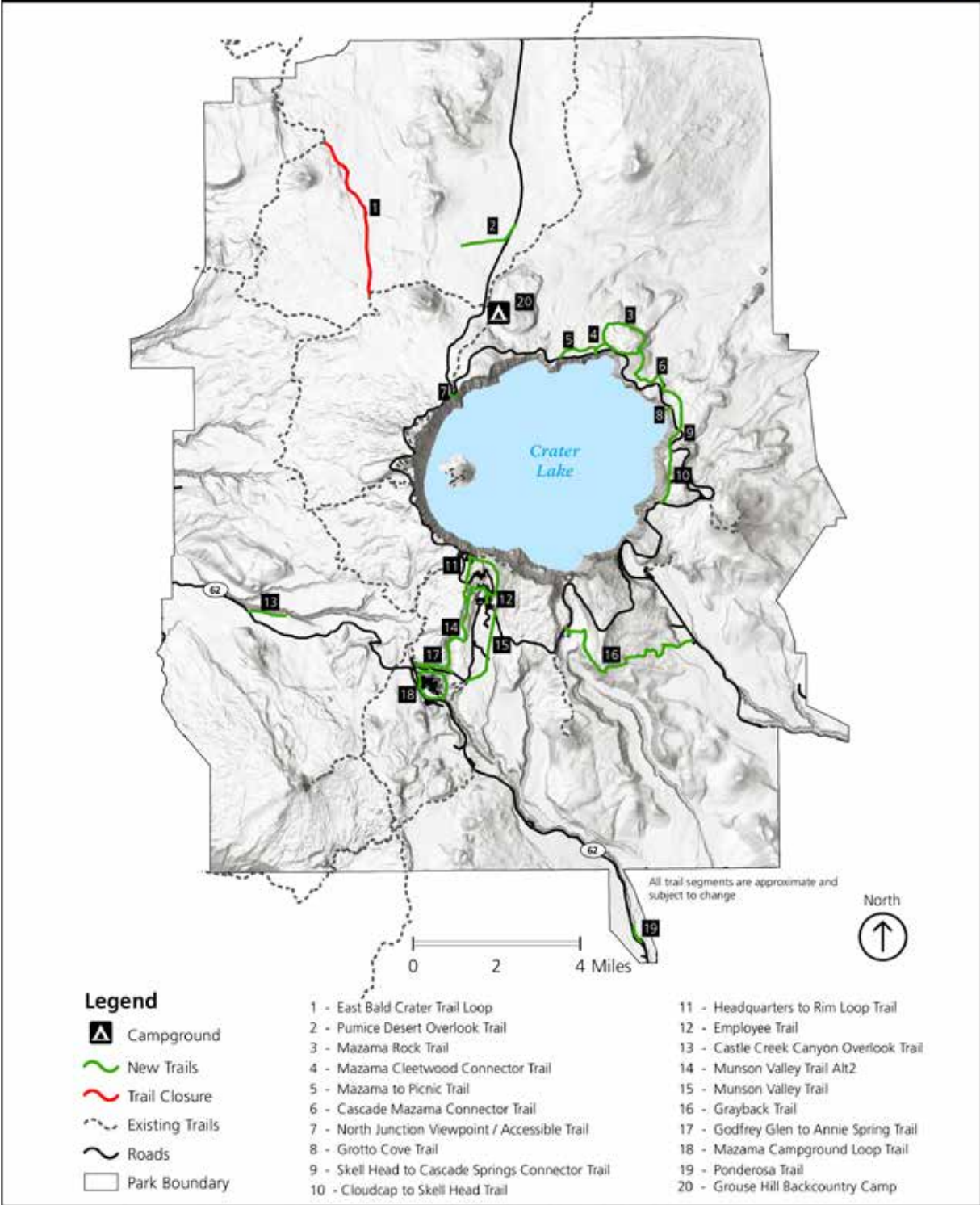
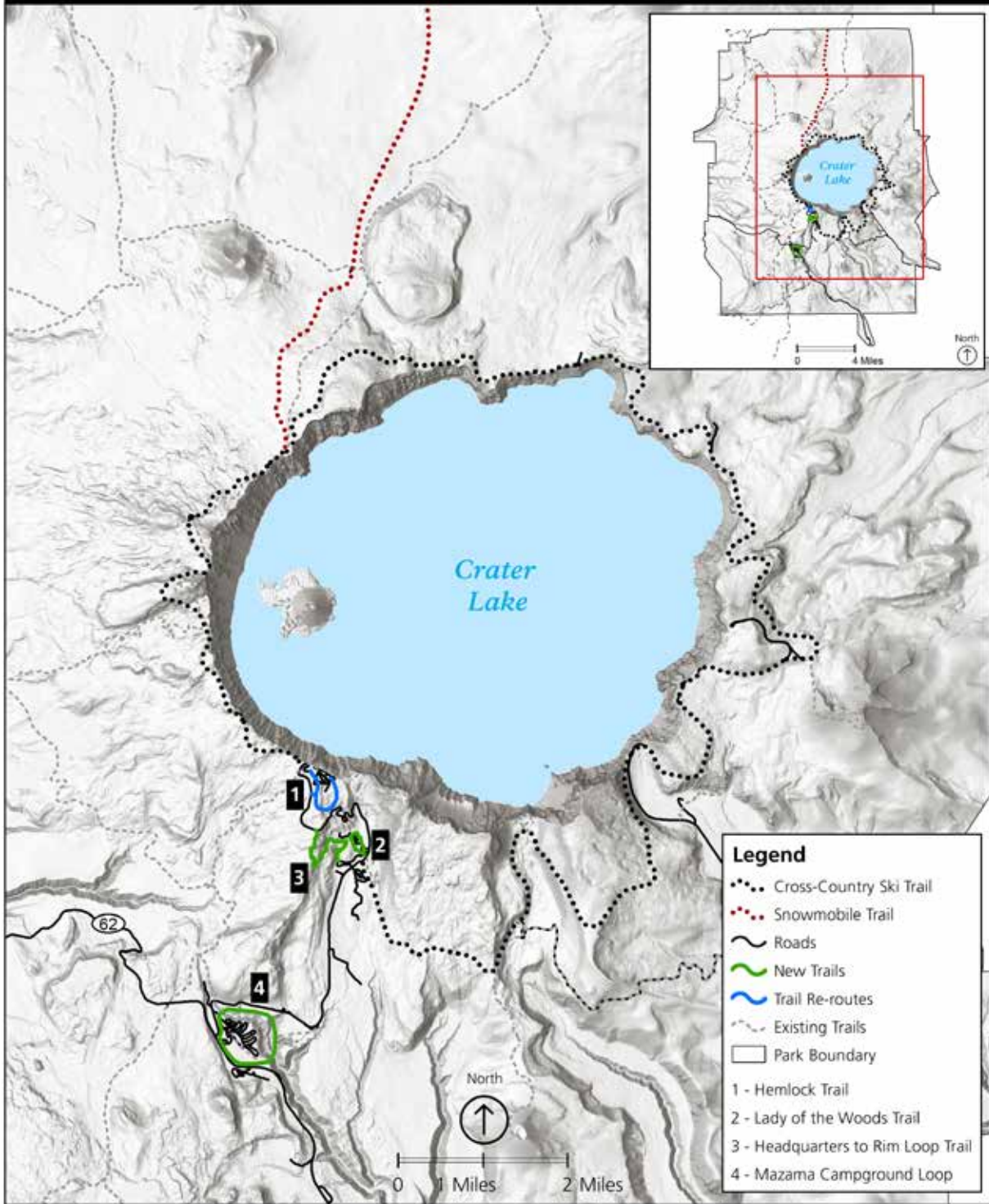


Figure 2 - Proposed Action: Winter Use

National Park Service
U.S. Department of the Interior



How to Comment

Crater Lake National Park is asking for public feedback on the proposed action from January 31, 2017 to March 1, 2017. When commenting, please provide as much detail as possible to assist us with documenting your thoughts.

Please submit your comments at the NPS Planning, Environment, and Public Comment (PEPC) website <https://parkplanning.nps.gov/tmpfeedback>. Once on the website, select “Open for Comment” to provide your thoughts.

Comments may also be submitted in writing to:

Crater Lake National Park
Attention: Planning Team, Trail Management Plan
P.O. Box 7
Crater Lake, OR 97604

When responding, please consider the following questions:

- What do you think of the proposed changes in summer trails?
- What do you think of the proposed changes in winter trails?
- What kind of recreational experiences are you looking for on Crater Lake trails?

Planning Schedule

The following table lists the major steps in the planning process and when these events are expected to occur.

Milestone	Completion Date
Complete internal scoping	Fall 2016
Complete public scoping and consultation (current step in the process)	March 2017
Develop and refine preliminary alternatives	Summer 2017
Complete public review of preliminary alternatives	Fall 2017
Prepare the Draft Crater Lake Trail Management Plan and environmental assessment	Fall 2018
Complete public review of the draft plan/environmental assessment	Winter 2019
Finalize decision document	Spring 2019



FIRST-CLASS MAIL
POSTAGE & FEES PAID
NATIONAL PARK SERVICE
PERMIT NO. G-83

Public Scoping Newsletter

CRATER LAKE

TRAIL MANAGEMENT PLAN



OFFICIAL BUSINESS
PENALTY FOR PRIVATE USE \$300

National Park Service
U.S. Department of the Interior
Crater Lake National Park
Attention: Planning Team, Trail Management Plan
P.O. Box 7
Crater Lake, OR 97604

